

Intro til Solibri Model Checker

Kjeld Svidt

Checking

Add Check Report

3D Spin Info

| Rule Set | OK | Warning | Error |
|---|----|---------|-------|
| Space Checking | | | |
| The Model Should Have Spaces | OK | | |
| Space Properties | | | |
| Space Validation | | | |
| Space Group Analysis | | | |
| Intersection Checking | | | |
| Intersections - Same Kind of Components | | | |
| Wall - Wall Intersections | | | |
| Slab - Slab Intersections | | | |
| Roof - Roof Intersections | | | |
| Beam - Beam Intersections | | | |
| Column - Column Intersections | | | |
| Door - Door Intersections | | | |
| Window - Window Intersections | | | |
| Stair - Stair Intersections | | | |
| Suspended Ceiling - Suspended Ceiling Intersections | | | |
| Railing - Railing Intersections | | | |
| Ramp - Ramp Intersections | | | |

Results

Automatic

Results

Intersecting Components [0/7]

Intersecting Components in Different Floors [0/7]

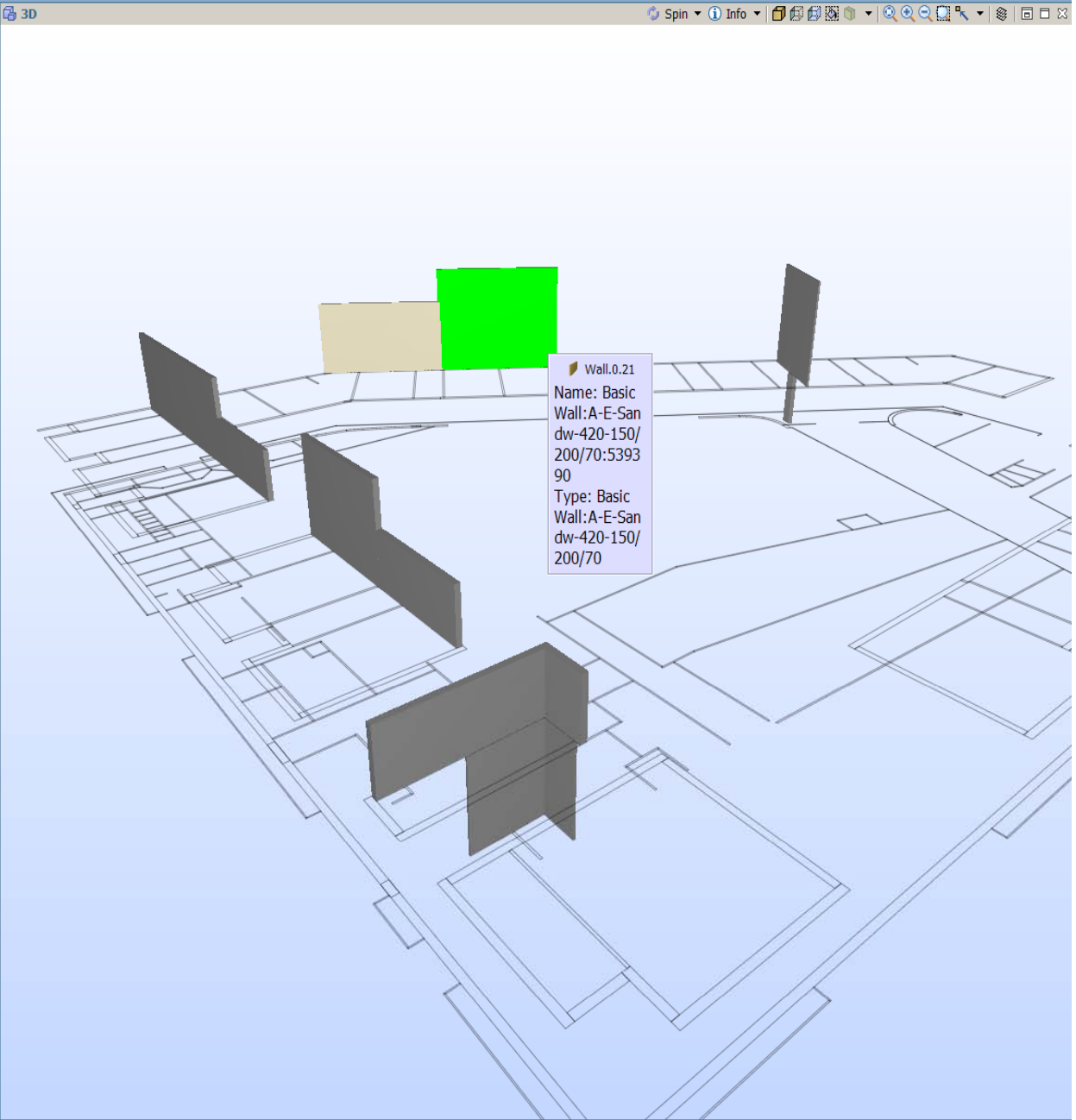
- Basic Wall:A-E-Sandw-420-150/200/70 (2) [0/2]
 - Basic Wall:A-E-Sandw-420-150/200/70 and Basic Wall:A-X-Conc-150 [0/1]
 - Wall.-2.30 (Basic Wall:A-X-Conc-150) and Wall.0.87 (Basic Wall:A-E-Sandw-420-150/200/70)
 - Wall.-2.30
 - Wall.0.87
 - Basic Wall:A-E-Sandw-420-150/200/70 and Basic Wall:A-X-ConcPC-120 [0/2]
 - Basic Wall:A-E-Sandw-420-150/200/70 and Basic Wall:A-X-ConcPC-150 [0/1]
 - Basic Wall:A-I-Gyps-Gyps-120-25/70/25 and Basic Wall:A-X-Conc-180 [0/1]

Similar Intersections in One Floor [0/2]

Info

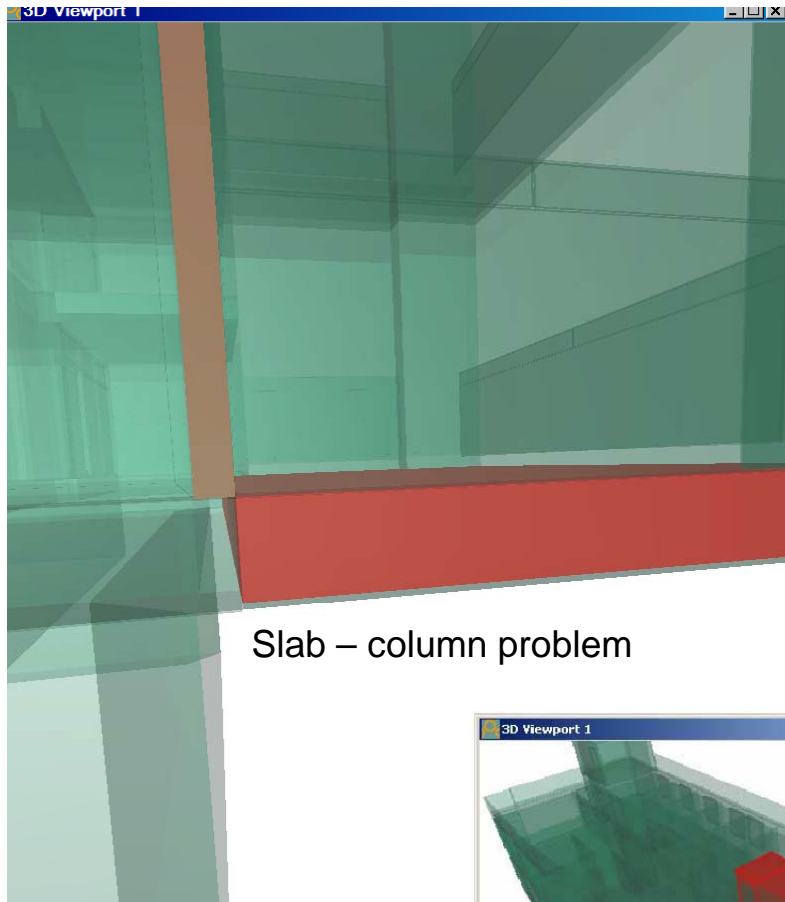
Wall.0.21

| Identification | Location | Quantities | Material | Profile | Relations |
|----------------|--|------------|----------|---------|-----------|
| Property | | Value | | | |
| Model | Fjordglimt | | | | |
| Name | Basic Wall:A-E-Sandw-420-150/200/70:539390 | | | | |
| Type | Basic Wall:A-E-Sandw-420-150/200/70 | | | | |
| GUID | 3ISBVbkd3TBnF6mAQADGa | | | | |
| BATID | 539390 | | | | |
| Layer | A-WALLMBM | | | | |
| Is External | True | | | | |
| Geometry | Extrusion | | | | |

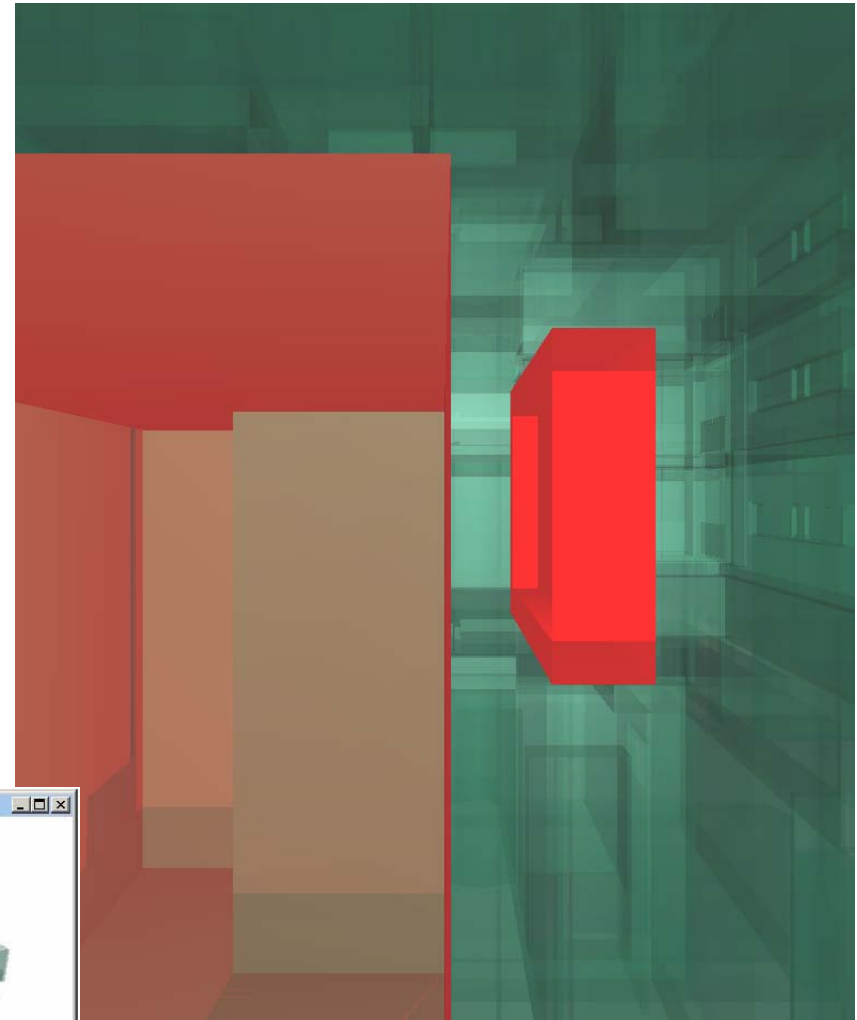
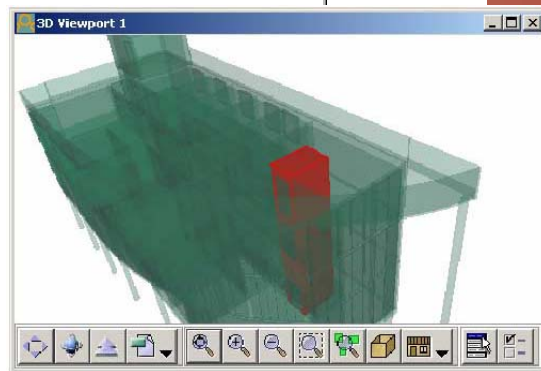


Model checker

Find collisions or 'missing collisions'



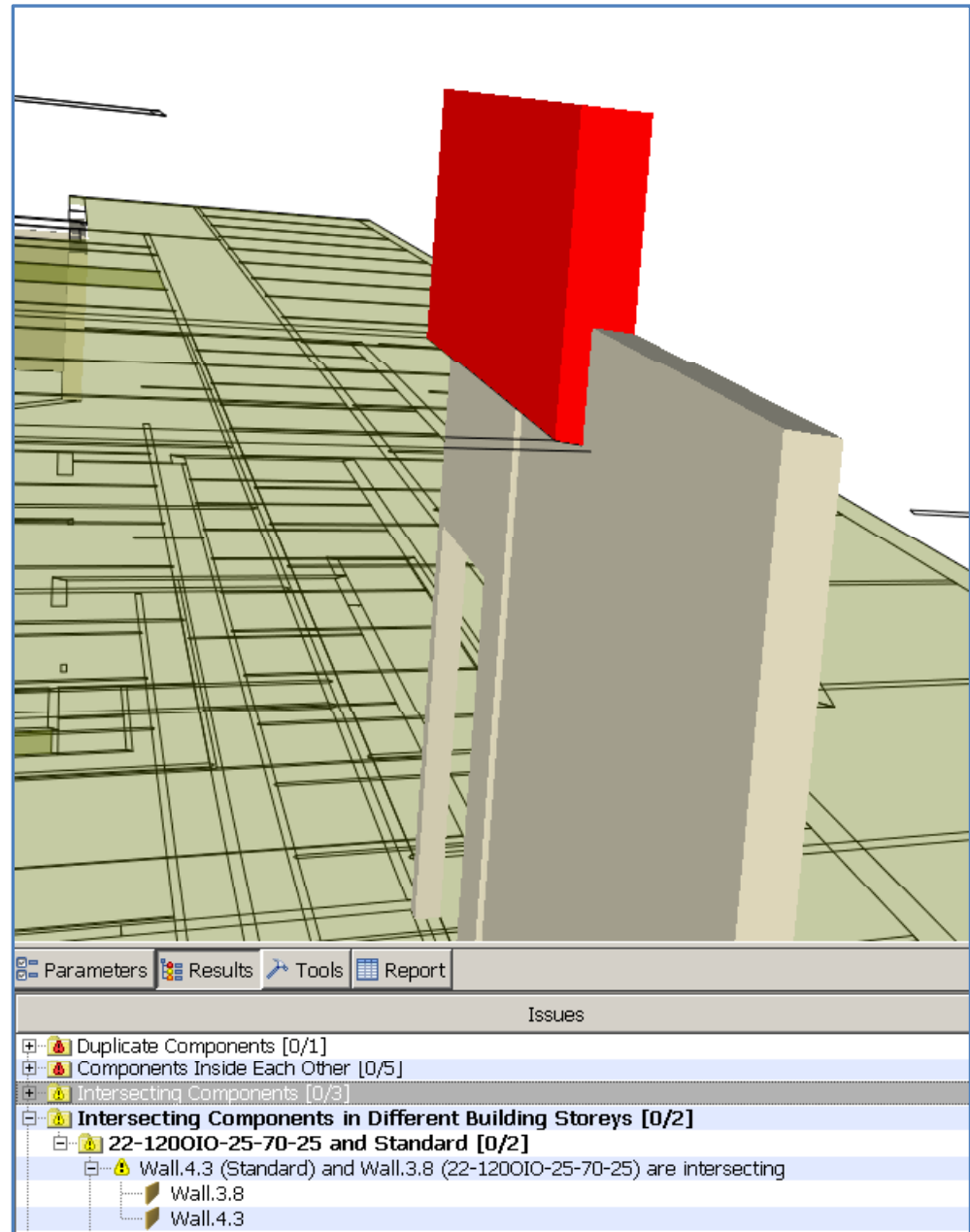
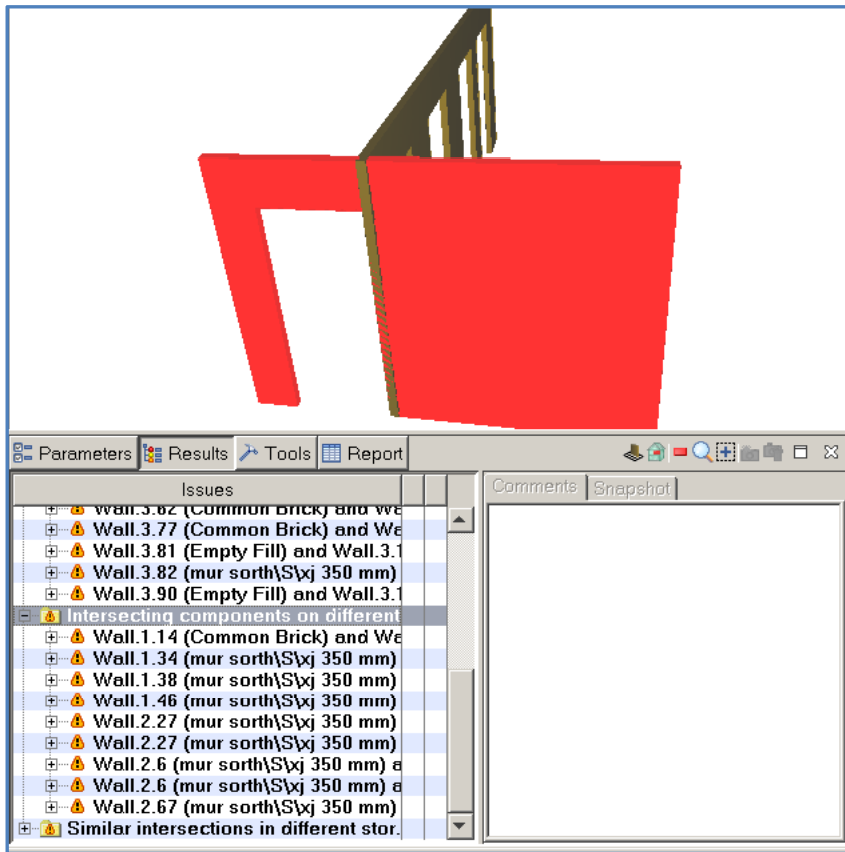
Slab – column problem



Wall – Window problem

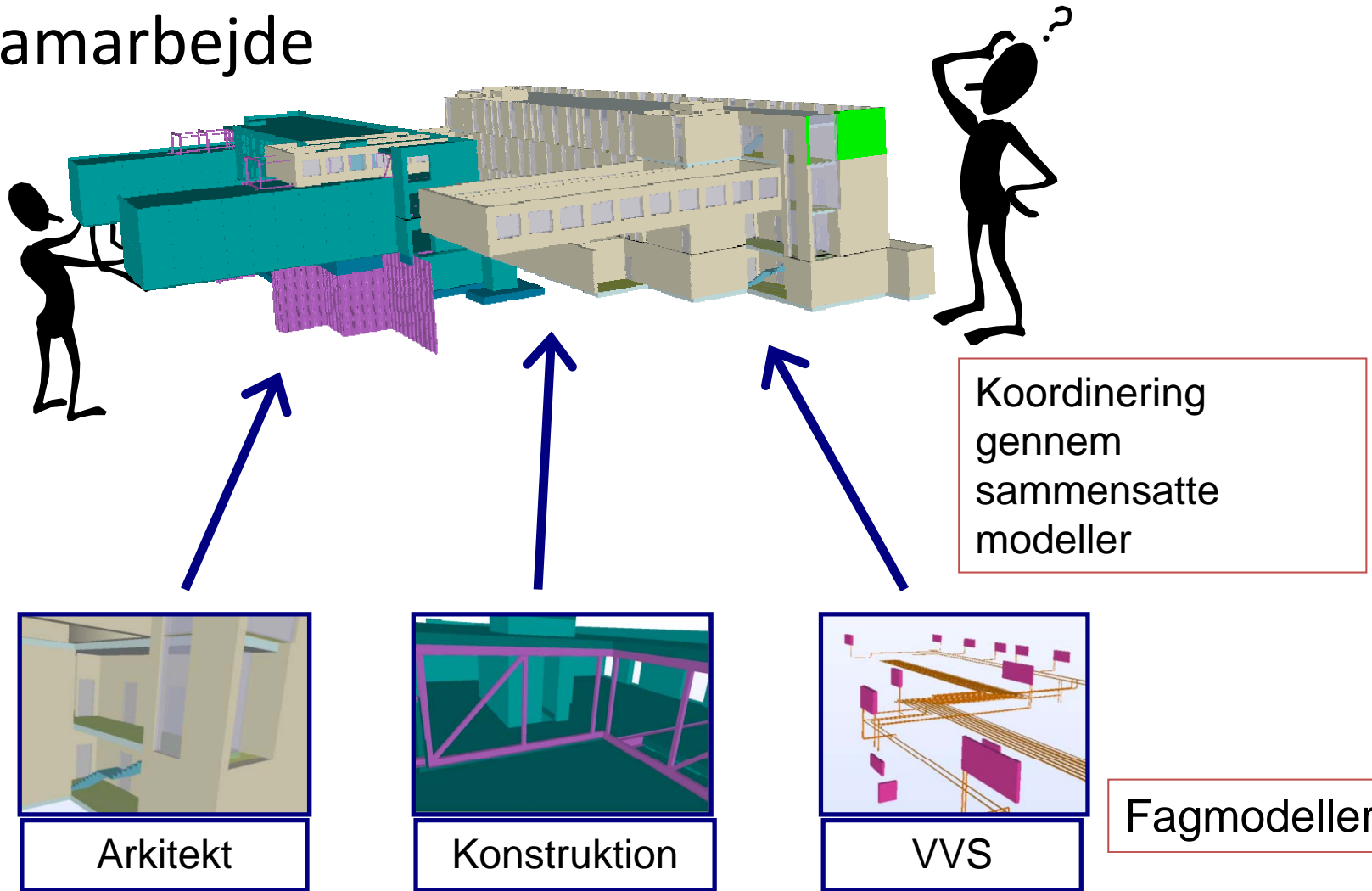
Model checker

Intersecting walls



Modelstøttet samarbejde

Solibri



Rule set parameters

The image shows two overlapping windows from the Revit software interface. The background window is the 'Parameters' dialog, and the foreground window is a smaller 'Parameters' dialog with a text box overlaid on it.

Text Box (Left): Intersection wall – other componentes

Parameters Dialog (Right):

- Architectural Model: 60% (blue bar)
- Structural Model: (red bar)
- Compared Components (Left):

| Component | Classification Name |
|-----------|---------------------|
| Wall | |
| | |
| | |
| | |
| | |
| | |
| | |
| | |
| | |
| | |
- Compared Components (Right):

| Component | Classification Name |
|-----------|---------------------|
| Wall | |
| Beam | |
| Column | |
| | |
| | |
| | |
| | |
| | |
| | |
| | |
- Classification: Building Elements (dropdown)
- Tolerance: 20 mm (input field)

Parameters Dialog (Left):

- Component Disciplines and Types to Be Checked
- Discipline 1: Structural
- Discipline 2: Structural
- Component 1: Wall
- Component 2: Slab, Column, Beam, Roof, Building Element Part, Footing
- Include Intersections:
 - Duplicate
 - Inside
 - Overlapping
 - Intersection Tolerances:
 - Horizontal: 50 mm
 - Vertical: 10 mm
- Ignore Intersections When Intersecting:
 - In the same system
 - In the same layer and model

Programmer

- Solibri Model Checker
 - kontrol af om bygningsmodel lever op til en række krav
 - kollisionskontrol mellem forskellige fagmodeller
- Solibri Model Viewer
 - Gratis viewer til at vise IFC-filer
 - Kan hentes hos www.solibri.com
- Solibri IFC optimizer
 - Gratis program til optimering af store IFC-filer, så de fylder mindre
 - Kan hentes hos www.solibri.com

Installation

- Installationsfil og user guide i
 - \\appl-i5.cs.aau.dk\nobackup\Shared_software\Solibri
- Programmet virker kun, hvis maskinen er tilsluttet netværket på Institut for Byggeri og Anlæg, enten direkte i et af vore netstik, eller vores trådløse net eller gennem VPN.
- Vi har kun licens til 20 samtidige brugere, så **start kun 2 pr gruppe**. Første gang programmet startes skal programmet registreres. Vælg "Floating License" og gå videre til næste skærm billede, "Configure License Server". Dobbeltklik i feltet under "Hostname or IP Address", skriv 192.168.183.21 og tryk på Scan-knappen til højre. I meddelelsesfeltet nedenunder skulle der nu komme følgende tekst:

Connecting 192.168.183.21%6200...
CHECK OUT - OK
CHECK IN - OK
License OK!

- Tryk herefter Finish.