

Semantic Web

Efterfølgende er vist fire eksempler på brugen af RDFedt.

Eksempel 1

RDFedt er her blevet brugt til at lave metadata for gruppens projektvirksomheds hjemmeside.

The screenshot displays the RDFedt application window. The main area shows an RDF tree structure for an RDF description. The tree includes the following elements:

- rdf:RDF
 - xmlns:rd="http://www.w3.org/1999/02/22-rdf-syntax-ns#" (green)
 - xmlns:rdfs="http://www.w3.org/2000/01/rdf-schema#" (green)
 - xmlns:dc="http://purl.org/dc/elements/1.1/" (green)
 - rdf:Description
 - rdf:about="http://ds-elcobyg.dk" (green)
 - dc:title
 - Elcobyg (red)
 - dc:creator
 - DS-elcobyg (red)
 - dc:language
 - Dansk (red)
 - dc:subject
 - Beskrivelse af DS Elcobyg og virksomhedens forretningsområder (red)

```
Generated RDF Code

<rdf:RDF xmlns:rd="http://www.w3.org/1999/02/22-rdf-syntax-ns#" xmlns:rdfs="
<rdf:Description rdf:about="http://ds-elcobyg.dk">
  <dc:title>
    Elcobyg
  </dc:title>
  <dc:creator>
    DS-elcobyg
  </dc:creator>
  <dc:language>
    Dansk
  </dc:language>
  <dc:subject>
    Beskrivelse af DS Elcobyg og virksomhedens forretningsområder
  </dc:subject>
</rdf:Description>
</rdf:RDF>
```

Objects

Name

yg og virksomhedens forretningsområder

Type

Element Attribut Content

Element Attribut Content

Comment


Comment

minimize Tags

RDF Validator Results - Microsoft Internet Explorer

Filel Rediger Vis Foretrukne Funktioner Hjælp

Adresse <http://www.w3.org/RDF/Validator/ARPServlet>

W3C **RDF Validation Results** 

[Source](#) | [Triples](#) | [Messages](#) | [Graph](#) | [Feedback](#) | [Back to Validator Input](#)

Validation Results

Your RDF document validated successfully.

Triples of the Data Model

Number	Subject	Predicate	Object
1	http://ds-elcobyq.dk	http://purl.org/dc/elements/1.1/title	"Elcobyg"
2	http://ds-elcobyq.dk	http://purl.org/dc/elements/1.1/creator	"DS-elcobyg"
3	http://ds-elcobyq.dk	http://purl.org/dc/elements/1.1/language	"Dansk"
4	http://ds-elcobyq.dk	http://purl.org/dc/elements/1.1/subject	"Beskrivelse af DS Elcobyg og virksomhedens forretningsområder"

Internet

start 5 Internet Explorer RDFedt Dokument 1 - Microso... 3 Windows Messenger DA 11:54

RDF Validator Results - Microsoft Internet Explorer

Filer Rediger Vis Foretrukne Funktioner Hjælp

Adresse <http://www.w3.org/RDF/Validator/ARPServlet>

4	http://ds-elcobyg.dk	http://purl.org/dc/elements/1.1/subject	virksomhedens forretningsområder"
---	---	---	-----------------------------------

The original RDF/XML document

```
1: <rdf:RDF xmlns:rdf="http://www.w3.org/1999/02/22-rdf-syntax-ns#" xmlns:rdfs="http://www.w3.org/2000/01/rdf-schema#" xr
2: <rdf:Description rdf:about="http://ds-elcobyg.dk">
3: <dc:title>
4:   Elcobyg
5: </dc:title>
6: <dc:creator>
7:   DS-elcobyg
8: </dc:creator>
9: <dc:language>
10:  Dansk
11: </dc:language>
12: <dc:subject>
13:  Beskrivelse af DS Elcobyg og virksomhedens forretningsområder
14: </dc:subject>
15: </rdf:Description>
16: </rdf:RDF>
17:
```

Graph of the data model

Elcobyg

Internet

start 5 Internet Explorer RDFeit Dokument 1 - Micro... 3 Windows Messenger DA 11:55

RDF Validator Results - Microsoft Internet Explorer

Adresse: <http://www.w3.org/RDF/Validator/ARPServlet>

```

15: </rdf:Description>
16: </rdf:RDF>
17:

```

Graph of the data model

```

graph LR
    A([http://ds-elcobyg.dk]) -- "http://purl.org/dc/elements/1.1/title" --> B[Elcobyg]
    A -- "http://purl.org/dc/elements/1.1/creator" --> C[DS-elcobyg]
    A -- "http://purl.org/dc/elements/1.1/language" --> D[Dansk]
    A -- "http://purl.org/dc/elements/1.1/subject" --> E[Beskrivelse af DS Elcobyg og virksomhedens forretningsområder]

```

Feedback

If you suspect the parser is in error, please enter an explanation below and then press the **Submit problem report** button, to mail the report

Eksempel 2

Virtuelle bygninger – Semantic Web

Nedenstående viser den første model samt det originale RDF dokument.

RDF Validator Results - Microsoft Internet Explorer

Adresse <http://www.w3.org/RDF/Validator/ARPServet>

```

1: <rdf:RDF xmlns:rdf="http://www.w3.org/1999/02/22-rdf-syntax-ns#" xmlns:rdfs="http://www.w3.org/2000/01/rdf-schema#" xmlns:dc="http://purl.org/dc/elements/1.1/">
2:   <rdf:Description rdf:about="http://www.test.dk/dok1.pdf">
3:     <dc:title>
4:       Virtuelle Bygninger
5:     </dc:title>
6:     <dc:date>
7:       November 2005
8:     </dc:date>
9:     <dc:subject>
10:      Eva Braad
11:    </dc:subject>
12:    <dc:relation>
13:      Gruppe 2.117
14:    </dc:relation>
15:  </rdf:Description>
16: </rdf:RDF>
17:
18:

```

Graph of the data model

start | Indbakke - Micr... | Exercises/minpr... | Sem 7. Knowled... | RDF Validator R... | RDFedt | Internettet | DA | 11:46

I næste figur er dokumentet udvidet.

RDF Validator Results - Microsoft Internet Explorer

Adresse <http://www.w3.org/RDF/Validator/ARPServet>

Graph of the data model

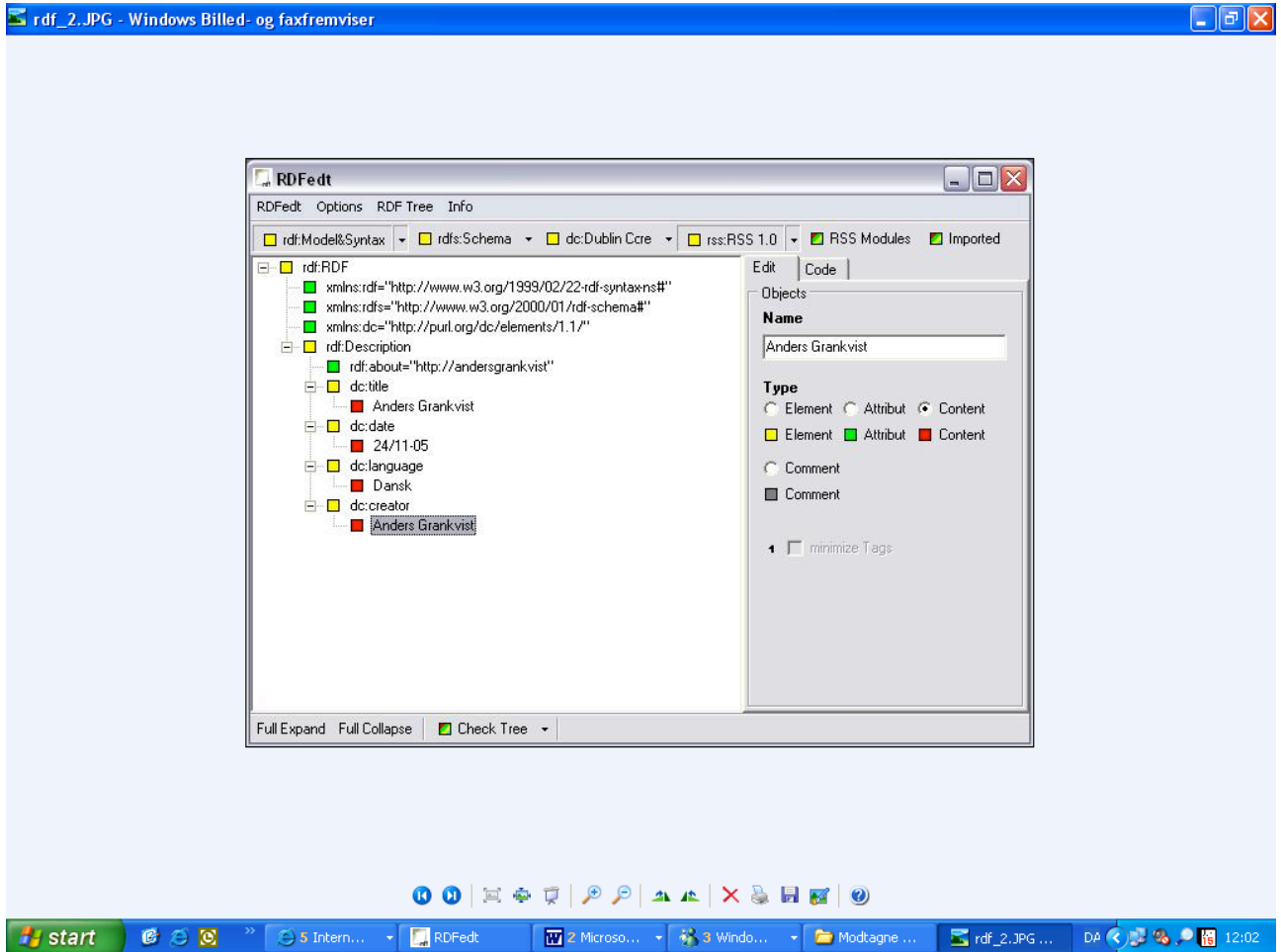
Feedback

start | Indbakke - Micr... | Exercises/minpr... | Sem 7. Knowled... | RDF Validator R... | RDF Validator R... | RDFedt | Dokument 1 - M... | Internettet | DA | 11:47

```
<rdf:RDF xmlns:rdf="http://www.w3.org/1999/02/22-rdf-syntax-ns#"
xmlns:rdfs="http://www.w3.org/2000/01/rdf-schema#"
xmlns:dc="http://purl.org/dc/elements/1.1/">
  <rdf:Description rdf:about="http://www.test.dk/dok1.pdf">
    <dc:title>
      Virtuelle Bygninger
    </dc:title>
    <dc:date>
      November 2005
    </dc:date>
    <dc:subject>
      Eva Braad
    </dc:subject>
    <dc:relation>
      Gruppe 2.117
    </dc:relation>
  </rdf:Description>
  <rdf:Statement rdf:about="http://www.ds-elcobyg.dk">
    <dc:type>
      7. semester projekt
    </dc:type>
    <dc:description>
      Fokus på ordreflow
    </dc:description>
  </rdf:Statement>
</rdf:RDF>
```

Eksempel

3



rdf_1.JPG - Windows Billed- og faxfremviser

Triples of the Data Model

Number	Subject	Predicate	Object
1	http://andersgrankvist	http://purl.org/dc/elements/1.1/title	"Anders Grankvist"
2	http://andersgrankvist	http://purl.org/dc/elements/1.1/date	"24/11-05"
3	http://andersgrankvist	http://purl.org/dc/elements/1.1/language	"Dansk"
4	http://andersgrankvist	http://purl.org/dc/elements/1.1/creator	"Anders Grankvist"

The original RDF/XML document

```

1: <rdf:RDF xmlns:rdf="http://www.w3.org/1999/02/22-rdf-syntax-ns#" xmlns:rdfs="http://www.w3.org/2000/01/rdf-schema#" xmlns:dc="http://purl.org/dc/elements/1.1/">
2: <rdf:Description rdf:about="http://andersgrankvist">
3: <dc:title>
4:   Anders Grankvist
5: </dc:title>
6: <dc:date>
7:   24/11-05
8: </dc:date>
9: <dc:language>
10:  Dansk
11: </dc:language>
12: <dc:creator>
13:   Anders Grankvist
14: </dc:creator>
15: </rdf:Description>
16: </rdf:RDF>

```

Graph of the data model

Eksempel 4

The screenshot shows the RDFedit application window. The title bar reads "RDFedit". The menu bar includes "RDFedit", "Options", "RDF Tree", and "Info". Below the menu bar are several dropdown menus: "rdf:Model&Syntax", "rdfs:Schema", "dc: Dublin Core", "rss:RSS 1.0", "RSS Modules", and "Imported". The main area is divided into two panes. The left pane, titled "rdf:RDF", shows a tree structure of RDF elements. The right pane, titled "Objects", shows the details of the selected object.

RDF Tree Structure:

- rdf:RDF
 - xmlns:rdf="http://www.w3.org/1999/02/22-rdf-syntax#"
 - xmlns:rdfs="http://www.w3.org/2000/01/rdf-schema#"
 - xmlns:dc="http://purl.org/dc/elements/1.1/"
 - rdf:Description
 - rdf:about="http://andersgrankvist"
 - dc:title
 - Anders Grankvist
 - dc:date
 - 24/11-05
 - dc:language
 - Dansk
 - dc:creator
 - Anders Grankvist